

How to Download Citrix & Login to R2 Agency Management

Navigate to <https://www.citrix.com/downloads/workspace-app/windows/workspace-app-for-windows-latest.html>

Click on [Download Citrix Workspace app for Windows](#)

The screenshot shows the Citrix website's download page for the Citrix Workspace app 2403 for Windows. The page includes a search bar, navigation menu, and a main content area with the following details:

- Find Downloads:** Citrix Workspace App (dropdown), Search Downloads (input field).
- Support Resources:** Product Documentation, Knowledge Center, Export or import restrictions.
- Citrix Workspace app 2403 for Windows:**
 - Release Date: Apr 24, 2024
 - Compatible with: Windows 11, 10 as well as Windows Server 2022, 2019, 2016.
 - Download Citrix Workspace app for Windows (button)
 - (365 MB -.exe)
 - Version: 24.3.0.93(2403)
 - Citrix Workspace app 2403 for Windows (summary box):
 - Apr 24, 2024
 - 365MB (-.exe) Download File (button)
 - Version: 24.3.0.93(2403)
 - Checksums: SHA-256-5c369d1c127b14a8530b7441a6d3ec49c681fe672e8447c63ecf453cf8b87237

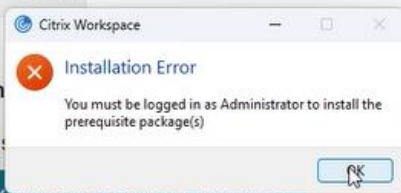
Citrix Workspace app 2403 for Windows

Date: Apr 24, 2024

Compatible with

Windows 11, 10 as well as Windows Server 2022, 2019, 2016.

Download Citrix workspace app for windows



If you reach an **Installation Error**, you will need to contact your IT System Administrator to allow access for downloading and installing Citrix.

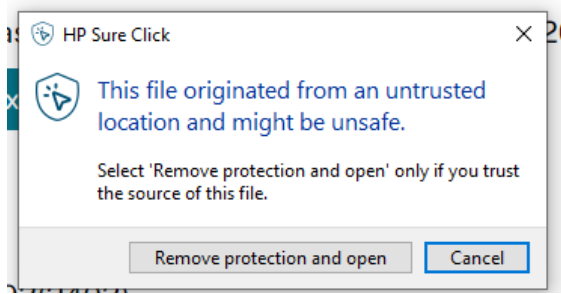
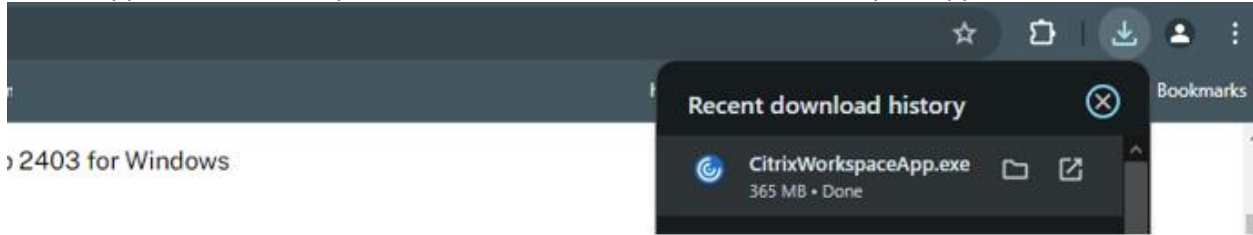
The End-User License Agreement will pop up. Click [Yes, I accept](#).

The screenshot shows the End-User License Agreement (EULA) dialog box. It includes the following elements:

- End-User License Agreement** (title)
- Please read the statement below and accept the terms of use to proceed:
- [View End-user License Agreement \(EULA\)](#) (link)
- Do you accept all the terms of the preceding statement?
- Buttons: [Yes, I accept](#) (highlighted), [No](#)
- Version: 24.3.0.93(2403) (at the bottom)

How to Download Citrix & Login to R2 Agency Management

On the upper run corner in your downloads, double click the CitrixWorkspaceApp.exe



If your computer has certain security measures, click “remove protection and open.”

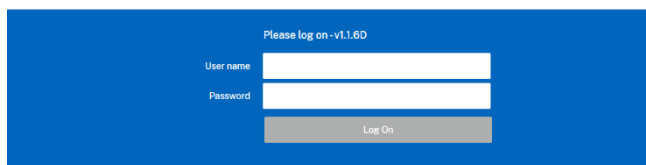
Give it a few moments to download.

Once Citrix has downloaded, you will go to:

<https://login.hchb.com/vpn/index.html>

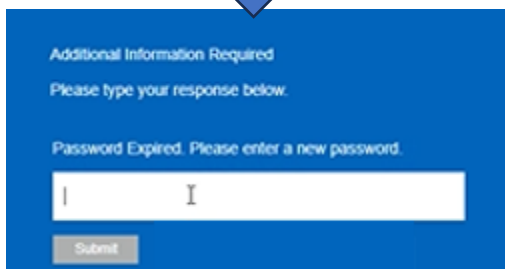
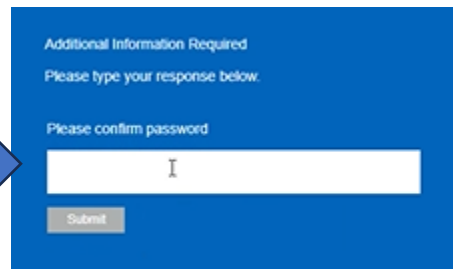
Bookmark this page as you will access Homecare Homebase (HCHB) from here.

homecare homebase™
Empowering Exceptional Care.™

A screenshot of the Homecare Homebase login page. It features a blue header with the logo and tagline. Below the header, there's a white login form with fields for 'User name' and 'Password', and a 'Log On' button. The text 'Please log on -v1.1.6D' is above the fields. Below the form, there's a link to the 'Customer Experience Portal' for troubleshooting.

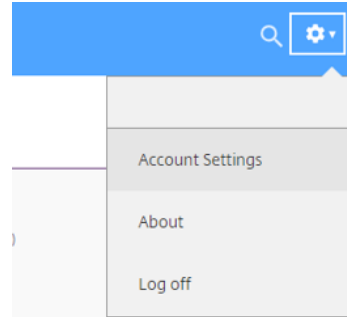
Enter your provided username and temporary password.

You will be prompted to input a new password and then you will confirm your new password.

A screenshot of a blue 'Additional Information Required' page. The text says 'Please type your response below.' and 'Password Expired. Please enter a new password.' There is a white input field with a cursor and a 'Submit' button.A screenshot of a blue 'Additional Information Required' page. The text says 'Please type your response below.' and 'Please confirm password'. There is a white input field with a cursor and a 'Submit' button.

How to Download Citrix & Login to R2 Agency Management

Go to the upper right corner to the [cog wheel](#), click the drop down, go to [account settings](#).



Advanced

Activate Citrix Workspace app

Downloads a file that adds this workspace to your local Citrix Workspace app.

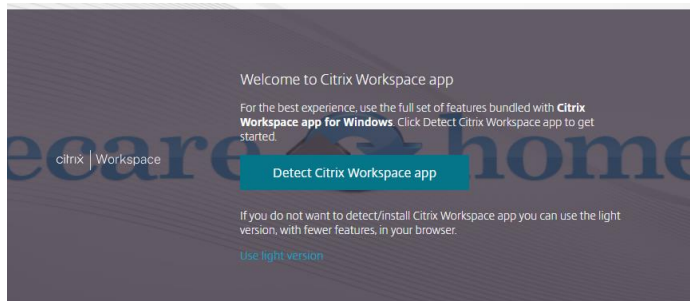
1. Click Activate Citrix Workspace App

Change Citrix Workspace app

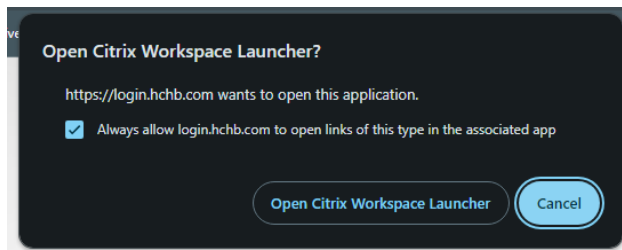
Opens a page that checks for a local Citrix Workspace app.

2. Click Change Citrix Workspace App

Current status: We can't detect a local Citrix Workspace app. Select Change Citrix Workspace app.

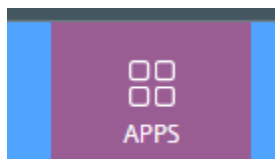


After you click [Change Citrix Workspace app](#), it will go to this screen. Click [Detect Citrix Workspace app](#).



Check "Always allow login.hchb.com to open links of this type in the associated app" and click [Open Citrix Workspace Launcher App](#)

Go back to your [Apps](#) screen and click on your [HCHB R2 Orb](#) to launch your database.



HCHB R2 -